



FireFly™ installed on fuse barrel

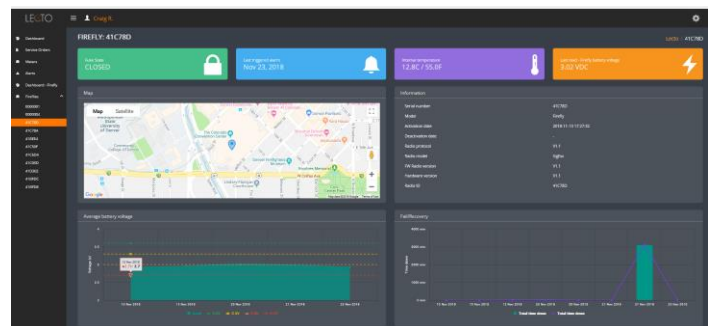
## FUSE CUTOUT INDICATOR

- TWO-WAY COMMUNICATIONS
- FUSE CUTOUT OPEN ALARM WITH LOCATION, DATE AND TIME STAMP
- FUSE CUTOUT RETURNED TO SERVICE WITH DATE AND TIME STAMP
- SAIDI - RECORDS NUMBER OF MINUTES PER OUTAGE AUTOMATICALLY IN DATABASE
- BATTERY STATUS
- ULTRA BRIGHT FLASHING RED LED
- FLASHES FOR UP TO 30 DAYS WHEN ACTIVATED
- LONG LIFE LITHIUM BATTERY
- SIMPLE TO INSTALL
- NO SERVICEABLE PARTS

The FireFly™ electronics are encapsulated in UV stable moisture resistant polycarbonate. It's internal lithium ion battery will last up to 20 years in both hot and cold environments. The FireFly's™ novel clip design permits installation of the FireFly™ on an installed fuse with a shotgun hotstick.

### Specifications:

Temperature Range: -40 - +70 C  
LED Flashing Rate: 3 Hz  
Activation Life: Up to 1,000 Hours Continuous  
Expected Inactive Life: 10 Years



LECTO FireFly Dashboard

**Monitor, Alarm, Record, Communicate and Control**

\*Patent Protected

©2018 Telescada. All rights reserved

222 Bolivar Street Canton, Massachusetts, USA TEL: 781-562-0475 [www.telescada.com](http://www.telescada.com) sales.desk@Telescada.com